

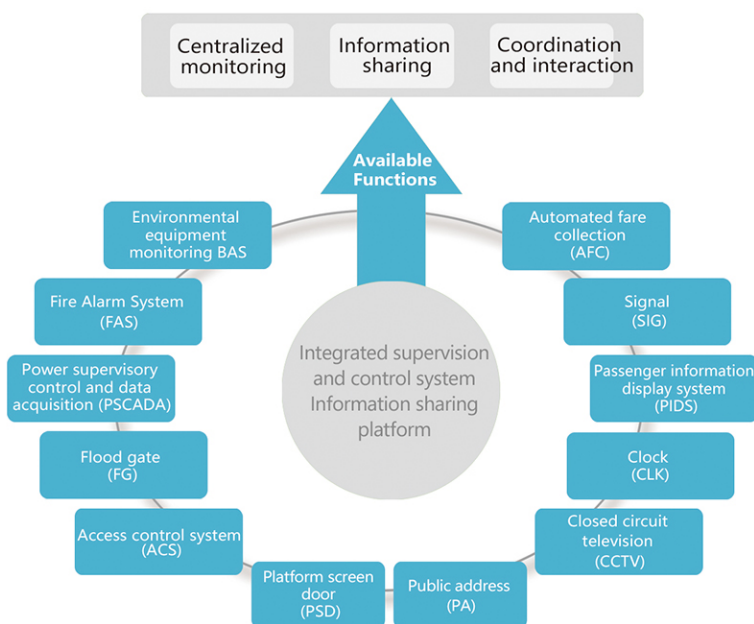
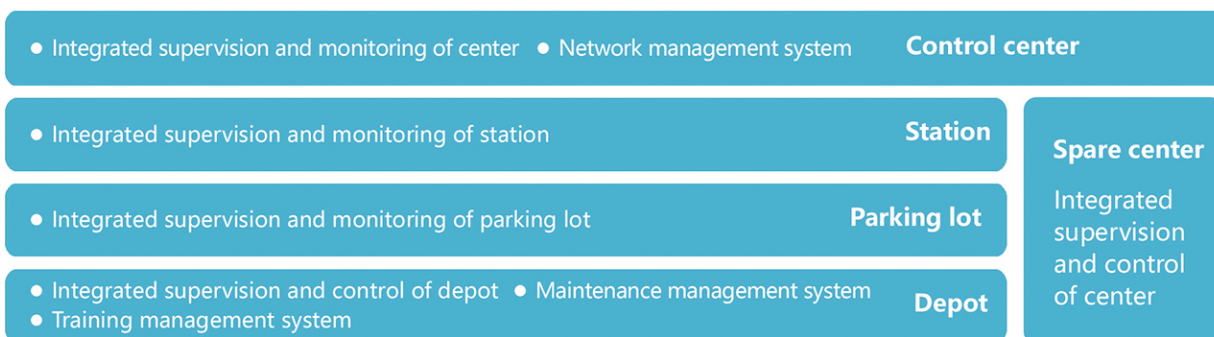
Integrated Supervision and Control System for Rail Transit

Integrated supervision and control - development and acceptance

Through decades of technology and product accumulation in the power grid industry, DFE has begun to develop an integrated supervision and monitoring system for urban rail transit since 2009, and completed independent development and product acceptance of complete software of E8500 integrated supervision and monitoring platform for rail transit on the basis of fully investigating the needs of the integrated supervision and monitoring system and obtained software copyright in 2011.



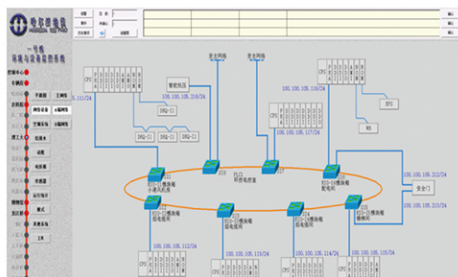
Integrated Supervision and Control - System Architecture



The integrated supervision and control system deeply integrates power monitoring and environment & equipment monitoring, and is interconnected to more than 10 specialized systems such as fire protection, PSD, PA, PIDS, AFC and video monitoring.

Integrated Supervision and Control System for Rail Transit

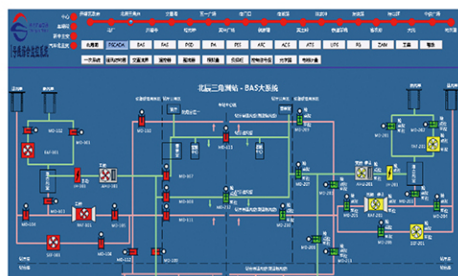
Integrated Supervision and Control - System Architecture



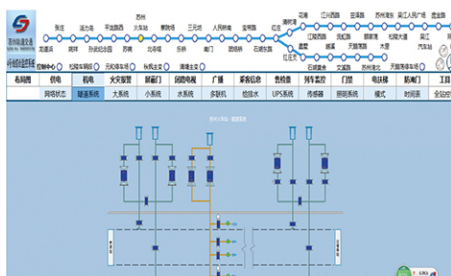
Harbin Metro Line 1 Environmental control



Integrated supervision and control system of Wuhan Metro



Integrated supervision and control system of Qingdao Metro



Integrated supervision and control system of Suzhou Metro

The E8500 integrated supervision and monitoring system, through more than 30 years of accumulation of DFE in power automation and industrial automation, was put on the market in 2011 and has been applied in more than 10 lines across China.

Lines	Type	Progress
Harbin Metro Line 1	Environment and equipment monitoring	Operation
Qingdao Metro Line 3	Integrated supervision and control	Operation
Nanjing Metro Line 10	Environment and equipment monitoring	Operation
Suzhou Rail Transit Line 4	Integrated supervision and control	Operation
Wuhan Metro Line 3	Integrated supervision and control	Operation
Wuhan Metro Line 4	Integrated supervision and control	Operation
Changsha Metro Line 1	Integrated supervision and control	Operation
Guangzhou Metro Line 6	Environment and equipment monitoring	Operation
Shijiazhuang Metro Line 1	Integrated supervision and control	Operation
Changchun Rail Transit Line 1	Integrated supervision and control	Operation
Qingdao Metro Line 2	Integrated supervision and control	Operation